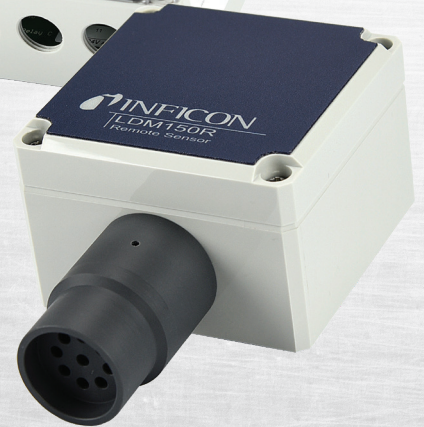


LDM150 and LDM150R

REFRIGERANT MONITORS

Simple. Safe. Monitors.

LDM150 and LDM150R are simple, reliable and safe solutions for standalone constant monitoring of ANY refrigerant gas. These monitors are a true “plug and play” option! See how these monitors fit any application.



ADVANTAGES

- Remote and integrated sensor options
- Low maintenance, single point calibration
- Easy field service
- Three adjustable alarm setpoints
- Low voltage operation
- Three relay outputs tie to any system or device
- Designed for any size application
- Factory calibrated
- Detects all CFCs, HFCs, HFOs, HCFCs, HCs, CFCs, CO₂, and NH₃

LDM150 REFRIGERANT MONITORS

SPECIFICATIONS			
PART NUMBER	743-202-HFC	743-202-CO2	743-202-NH3
Compatible refrigerants	R22, R32, R134a, R404a, R407c, R410a, R422b, R448a, R449a, R452a, R452b, R507 (AZ50), R1234yf and more	CO ₂	Ammonia
Power input	12-24 V (AC/DC), 50-60Hz		
Certification	CE, IP54	CE,IP67	CE, IP54
Alarm indication	Three alarm levels with relay outputs (5A)		
Sensor	Surface reaction	IR	Surface reaction

LDM150R REFRIGERANT MONITORS

SPECIFICATIONS				
PART NUMBER	743-203-HFC	743-203-CO2	743-203-NH3	743-203-R290
Compatible refrigerants	R22, R32, R134a, R404a, R407c, R410a, R422b, R448a, R449a, R452a, R452b, R507 (AZ50), R1234yf and more	CO ₂	Ammonia	R290,R600,R441a
Cable length	Not included (user provided)			5m (16.5 ft.)
Power source	12-24 V (AC/DC), 50-60Hz			
Certification	CE, I67 (monitor), IP54 (sensor)	CE,IP67	CE, I67 (monitor), IP54 (sensor)	CE, IP67 (monitor), IP56 (sensor), ATEX
Alarm indication	Integrated siren, flashing light and three alarm levels with relay outputs (5A)			Three alarm levels with relay outputs (5A)
Sensor	Surface reaction	IR	Surface reaction	

ACCESSORIES/REPLACEMENT PARTS

Red flashing siren	743-707-G1
Blue flashing siren	743-707-G2
MCT150 calibration tool	743-600-G1
Replacement sensor module for MCT150 (ammonia)	743-705-G1
Replacement sensor module for MCT150 (HFC/R290)	743-706-G1
Replacement sensor for LDM150R (CO ₂)	743-700-G1
Replacement sensor for LDM150 (CO ₂)	743-701-G1
Replacement sensor for LDM150/LDM150R (HFC)	743-704-G1
Replacement sensor for LDM150/LDM150R (ammonia)	743-703-G1
Replacement sensor for LDM150R (hydrocarbon) with cable (ATEX)	743-702-G1



www.inficonservicetools.com

service.tools@inficon.com

Due to our continuing program of product improvements, specifications are subject to change without notice.
eigi75a1-B ©2020 INFICON